

FRIENDS OF



MESSAGE FROM THE CHAIRMAN

Whilst appreciating that we are still subject to continuing challenges and uncertainties, I believe we should turn our thoughts to the year ahead with some optimism. With our membership now touching the 600 mark and a healthy bank balance, we are in a strong position to respond to financial requests from the Foundation. There also remains the prospect of joining one of the volunteer groups, something perhaps our newer members might well consider.

In addition to the Foundation's programme of events, (many carry a generous Friends' discount) the committee have prepared an attractive collection of social gatherings, talks and a visit. It is pleasing to report that the Morning Coffee, Afternoon Tea, and Summer Party ran at full capacity. Members will not need reminding that this year is the Queen's Platinum Jubilee, and our Summer Party will be duly marking this very special year. Our visit will be a first to Stratfield Saye, a country estate bought by the Duke of Wellington following the Battle of Waterloo. This visit sits in tandem with the new Ponsonby Exhibition in the Mansion, which is proving a great attraction to visitors.

The programme of talks looks equally fascinating. David's intriguingly entitled *Arabian Adventures*, is followed by a talk on the *Barn Owl Project and Birds of Prey Hospital*. Later in the year, it is hoped that Lord David Willetts will be free to address us. David, as an MP, represented the constituency of Havant for over twenty years and continues to live locally. Finally, there remains the ever popular, informative and enjoyable walks with Stansted's Head Forester, Michael Prior. The prospect then of enjoying ourselves whilst supporting this beautiful estate is one to cherish.

I remain extremely grateful to all my colleagues of The Committee who make every effort to enrich the advantages of membership and I look forward to meeting as many of you as possible in the months ahead. *Michael Olding*

MESSAGE FROM THE DIRECTOR

It is reassuring that, despite all the trials and tribulations of the last couple of years, Stansted Park has emerged from the wreckage of Covid in reasonable shape and certainly much better than we could ever have dared to hope back in the first half of 2020. I appreciate we are not yet 'through the woods' and there are many factors on the wider political and economic stage that could unsettle things, not to mention the uncertainty of the reaction to future Covid variants. However, it does seem that, slowly, the nation is beginning to live with the virus and that we are tentatively able to make plans with some degree of expectation that they will come to fruition. The public certainly continue to flock to Stansted Park in their droves and I expect that we will not see much diminution in the numbers visiting the Estate to enjoy its peace and beauty.

2021 concluded with a wonderful Christmas programme of concerts in the Chapel and House Tours organised by Lucy and Celia respectively and ably supported by our highly prized Volunteers.

The Events programme is already looking exciting for this year with the perennial Garden and Nostalgia Shows and, of course, the hugely popular Tribute Band and Proms Concerts. The Estate will also be holding its Open Weekend again this year on 2nd & 3rd July. The 'Stansted Summer Jamboree' is aiming to build on the inaugural event of last year; hopefully the Friends will support it in force! The work by Yanni Petsopoulos and Aleramo Lanza in the Mansion has continued apace with the exhibition in the Ponsonby Room (formerly the Waterloo & Victoria Room) now complete and the history of Stansted, as depicted in the Roberte & Mary Bessborough Room (formerly the Boudoir), nearing completion.

The Monthly Prayers held at Midday in the Chapel on the first Wednesday of the month are taking place once again and it would be good to see a host of Friends there; divine prayer is followed by exquisite coffee and a good chat.

There are many projects to be undertaken by the Estate this year. These include repairs to several windows in the Mansion and the listed wall in the Walled Gardens; the complete refurbishment of two Estate cottages and the Studio at the entrance to the Arboretum; further works to enhance the main Visitors' Car Park as well as signage incorporating our new logo are also planned. Things certainly never stand still here and one never quite knows what lies around the corner and we must be prepared for all eventualities. Although we plan as comprehensively as we can, as Admiral Nelson said: *'Something must always be left to chance in a sea-fight!'*

We are very sad to say goodbye to Celia Hodges who joined the Stansted family in 2020 just as the Lockdown started; she has brought much humour and energy to the Mansion, achieving a great deal in respect of the re-ordering of the Mansion and improvements to the Visitor Experience; we are hugely indebted to her. Celia leaves to work at the Watts Gallery but has promised to return on occasion to help out with events. We are very pleased to welcome Aleks James who assumes the role of Front of House Manager, a full time position. Aleks has worked as a Volunteer at Stansted for eight months and we are most fortunate to have someone so experienced to cope with a very wide and demanding portfolio.

Of course, 2022 marks the Platinum Jubilee of Her Majesty The Queen, which we will mark in a suitable fashion at the 'Stansted Summer Jamboree'.

My thanks again to the Friends for their unstinting support; 2022 will be a busy year and we will, I am sure, be calling upon your good services frequently! *David Bennett*



Re-Enactment Players at Stansted Unlocked



Lord Bessborough (left) Enjoying last years Stansted Unlocked

HEAD FORESTER'S NOTES - SPRING 2022

The planting season has so far gone very well, with a number of smaller areas now completed and work in the Wythy Piece, the largest area to plant this winter, about to start. I am looking forward to planting the two new landscape clumps planned for the East Park this winter. These are both on areas of previously arable ground, designed to add to the parkland landscape and, along with the other two, will replicate the tree area lost from the removal of the East Park Avenue. The species chosen for these are English oak, beech, copper beech, small-leaved lime and field maple. Anyone wishing to sponsor any of these trees can do so by contacting the Estate Office for the relevant form. Of the other two planned clumps, one was partially planted last year with disease resistant elms but, along with the other one, needs some more work on the retained trees from the old avenue before it can be completed and so they will be finished next winter.

Some of you will have noticed the splendid new bus shelter in Rowlands Castle commissioned by the village and created by a local green oak craftsman. I am pleased to report that, apart from the roof shingles, all the wood used, comprising of oak, Douglas fir and western red cedar, came from the forest and was sawn out by Sam and Terry on our mill.

I am now starting to make some early plans for a visit by the Southern Division of the Royal Forestry Society in September when members and guests will spend a day looking at what we have done in recent times and future plans for the forest. The RFS last visited Stansted in September 2010 when the national President attended and presented Derick Stickler, Head Forester of Windsor Great Park, Ron Patrick, Head Forester of Bereleigh Estate and, most importantly, my predecessor, John Rowe, with their RFS Long Service medals. On the previous visit we looked at results of the parkland restoration scheme and restocking woodland with natural regeneration using the profuse ash saplings that were a feature of the woodlands around the Sling at the time. How things change.



As we are a charity with education as a core value, I was pleased to provide an area of oak woodland for the Forestry Commission to use as a long-term experiment into tree and woodland health. Apart from physical inspections and recording by FC staff, there are various pieces of apparatus to collect samples from under the tree canopies. In addition, a weather station has been installed at the top of Rosamond's Hill. It will be interesting to see what findings they come up with in the years to come.

Sadly, I lost my brother just before Christmas, the person I have to thank for my present career choice. I had left school with a wish to become a Nature Reserve Warden, a post for which then, as well as now, there are very few vacancies. Meanwhile Greg had been busy and wasn't having little brother sitting around, so arrived home to announce that I had a job as a Forestry and Landscape Apprentice where he worked. It was from this start that I went on to Estate Forestry some years later. He retired as Forestry Officer for Peterborough City Council and his legacy is the green belt that surrounds the city. **Michael Prior (Photographs - Michael Prior)**



TREES FOR STANSTED ESTATE



Over the past few years it became clear that the WI Educational College, known as Denman College in Oxfordshire, which ran a wide variety of courses for WI members and non-members was no longer viable for the wide variety of courses it had held for members and non-WI members over the years. Founded in 1948 and named after Lady Denman, an early pioneer of the WI movement, (the largest voluntary women's organisation in the country), sadly, it has now closed its doors. Courses are, however, still available online.

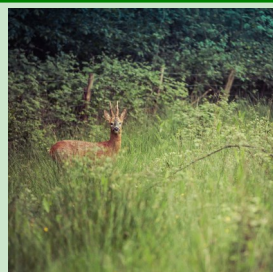
For many years RCWI has awarded an annual bursary to enable a member to attend a course of their choosing at Denman, often learning new skills from qualified tutors and then taking these interests further and acquiring new hobbies, be it silk painting, glass engraving or golf amongst many.

When a WI member died, monies were voluntarily donated by members in their memory and sent to Hampshire Federation of WIs and forwarded for the continuing upkeep and refurbishment projects at the College. The House and beautifully kept grounds at Marcham, near Abingdon were a delight to visit for a 2 or 3 day course whatever the time of year.

In view of the closure of Denman, members have discussed the matter and voted to continue to give money in memory of WI friends. It was decided to support the Stansted Park Foundation in acquiring new trees, under the guidance of the Head Forester Michael Prior, to replace those felled, often due to age or disease.

WI members always enjoy pleasurable walks in the Forest and we appreciate all that Stansted has to offer to us and its visitors. This has been particularly so during the recent periods of 'Lockdown' and restrictions due to Covid-19. We are pleased to be able to support its diverse activities on our doorstep with this new venture. **Jane Pickering, Rowlands Castle WI**

Editors Note: For those who would like to contribute to this wonderful project, the suggested cost of sponsorship is £10 per tree. Please contact Stansted Park Foundation, Stansted Park, Rowlands Castle, PO9 6DX for more information and leave your personal mark on this wonderful estate. **023 9241 2265 or enquiry@stanstedpark.co.uk**



I have seen the woods as well as the trees. So have Mary and Charlotte. So have Arthur and Myles. We have seen cock pheasants flying high over the beeches, woodcock flitting by the silver birch in the old forest and the duck and the teal in wing by the willows or soaring over the firs around the ponds. The forest is alive with wild birds and deer, foxes and squirrels. Wild animals live but trees live too. It is good to return to them; and return to them I always have. Even if the house dies (as it has done before) and the heavens fall, Stansted will still be there in reality or the imagination - like a tree planted or a remembered footprint in the snow.

Taken from 'Return to the Forest' by Fredrick, 10th Earl of Bessborough

AN INTRODUCTION TO RUTH TOMALIN

New members of FOSP may wonder why there are articles about Ruth Tomalin/Leaver/Ross and her association with Stansted Park, so, as there will be more to come, I thought a short resume might help.

Ruth was born in Piltown, Co. Kilkenny, Ireland, where her Kent-bred father, Tom Tomalin, was employed as Head Gardener by the Earl of Bessborough and her Scottish-bred mother was the daughter of the land steward for the Bessborough Estate. When the Irish dwelling was burned to the ground in 1923, the Bessborough family bought Stansted Park and the Tomalin family moved to England with them. I have recently written about her father, Tom Tomalin's association with the Earl, his work at Stansted keeping the gardens in first class condition for the Earl's many visitors plus providing fresh cut flowers and fruit for the house. Not forgetting the numerous show awards he gained for the Earl's collection. For Ruth, his impressionable and sensitive daughter, her childhood at Stansted was idyllic, wandering the local countryside absorbing all its lore and wisdom and writing endless notes on all she saw and heard. Her books are full of the joys and sadnesses of nature and only later did cynicism edge in as the need for modernisation began to destroy so much that she loved.

Her education began at Forestside School and continued at Chichester High School. She then studied at King's College, University of London, gaining her Diploma in Journalism in 1939 which she described as a fairly frivolous year! Between 1941 and 1942 Ruth served in the Women's Land Army, based at Brinkman's fruit nurseries near Bosham. In 1942 she managed to follow her journalistic dream of becoming a reporter for papers in Hampshire, Dorset and Hertfordshire. Her wartime years were mostly spent at Stansted and the many articles from the Portsmouth Evening News have been in earlier newsletter editions.

From 1961 she became a part-time press reporter at London Magistrates Courts and Crown Courts, in between which she wrote novels for adults and children, published her poetry and continued to do so for many years.

She wrote in her 'Wikipedia' entry, 'Most of my stories are about people and things of the English countryside. All are set in places well known to me at different times of my life.' Comments about her Ralph Oliver books were considered beyond the comprehension of small children but admirable stories for the right teenager who shares Ruth's intimate knowledge and love of wildlife, her care for the countryside and her concern for the impact of humanity on the landscape and fauna alike. For those who share these affections and concerns, they have much to offer. They are also about young people growing up - the problems of choosing a career, of coping with uncomprehending parents and of living through the anguish of first love.

These important themes are treated with sympathy, tact and humour and with acute, uncondescending insight. Ruth was a shy (camera shy especially!) and delightfully interesting and encyclopaedic person to talk to with a formidable memory. Her personality was the product of a richly sensitive imagination and an infectious zest for the sheer diversity of life.

I was fortunate to enjoy several meetings with her and a regular correspondence between us. She was also kind enough to give me many of her books which reside on a shelf beside me. Her love of Stansted never dimmed and it was a privilege to have attended her family memorial lunch held in the House. I feel certain that her spirit will never leave and her stories will continue to delight many readers. *Jill Waring*

NEW FRONT OF HOUSE MANAGER



As we enter the New Year, I am very excited to join the Stansted team in the role of Front of House Manager. I am hoping to utilise my experience from the luxury world of mega yachts, royal palaces in the Middle East and French Riviera estates, for the smooth operation of the unique and special venue of Stansted Park.

We welcomed more than 4400 visitors to the House, including Events and House Opening, during 2021. This year is already looking to be busy with the increased number of visits and events we will be hosting during the 2022 season. We have already successfully completed a few school visits and a large funeral reception for 100 people. Our busy calendar includes series of improvements around the House, including renovation of windows in the Blue Drawing Room, restoration of lights in the Dining Room and the purchase of a new Disabled Access Buggy.

The preparations for House Opening on Easter Sunday are in progress with House Stewards' training planned for March and the implementation of changes around the House. These include improving the signage in the House and the re-naming of two rooms where much work has been conducted on creating new displays. The Waterloo and Victoria Room will become 'The Ponsonby Room' and The Boudoir changes its name to 'The Roberte and Mary Bessborough Room'. Both the name changes reflect the wider interest in the Ponsonby family and the two Countesses who did so much to care for the House, the Estate and the people who worked here.

Having been a volunteer at the House for the last eight months, I know what a great team I will be working with and I am looking forward to seeing our amazing volunteers and Friends of the House really soon. *Aleks James*

STANSTED CAROL SERVICE



On 16th December, in the late afternoon, a Service of six carols and four readings was held in St Paul's Chapel. It was well attended and much enjoyed by Estate workers, Friends and parishioners. Afterwards, the congregation walked up through the trees, strung with white lights that almost turned the grounds into some kind of magic kingdom, to the Mansion House where, amongst the festive décor and before the great Christmas tree, mulled wine and mince pies were served.

A truly lovely event.

Valerie Godwin

PLEASE NOTE: Hard copies of the Newsletter are available from the Estate Office

FRIENDS VISIT TO STRATFIELD SAYE HOUSE 1ST JUNE 2022



We have been fortunate to be able to arrange an exclusive visit to Stratfield Saye House on Wednesday 1st June 2022, the home to the Dukes of Wellington since 1818.

For this year, Groups are limited to 30 visitors. We will be the only visitors on that day. There will be tours of the House included, with a maximum of six people on each tour, leaving every 15/20 minutes. There will also be talks on the Grand Duke's funeral and his Funeral Car housed in the Wellington Exhibition, charting his political and military life.

There is a small snack bar serving tea and coffee. Any other refreshments have to be pre-ordered.

Details of these will be sent at a later date. There are tables outside the Visitor Centre for picnics, as well as a grassy area adjacent to the coach park.

A BRIEF HISTORY

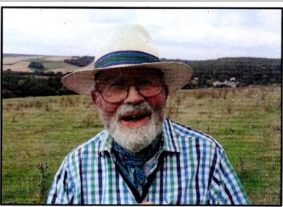
Following the Battle of Waterloo, a grateful nation granted a substantial sum of money to its great hero, the First Duke of Wellington, to enable the purchase of a House and Estate worthy of his status. His choice of Stratfield Saye as his family home, although relatively modest compared with other ducal seats, gave him the potential to build a huge palace in the north east corner of the park. Unable to commit himself to such a grandiose project through financial constraints, he devoted his time and energy to establish his family home as one of considerable comfort and convenience. The House today is the home of the 9th Duke of Wellington and his family.

In 1947, the 7th Duke of Wellington gave the 'Grand Duke's' wonderful collection of paintings to the Nation. Whilst many of these can be seen at Apsley House in London, Stratfield Saye still holds a fascinating collection of paintings and furniture purchased by the Grand Duke, with many personal mementos of his occupation of this most interesting country home.

Note. The Grand Duke was well acquainted with those members of the Ponsonby family who fought so bravely at Waterloo. Details of the death of Major General Sir William Ponsonby and the miraculous survival of his second cousin Colonel Frederick Cavendish Ponsonby, along with their personal effects, can be seen in the dramatic display room at Stansted House.

Chris Freeborough - A Booking Form with a Reply Slip will be sent out in March. Please do not try to book before then.

COMMANDER TONY COWIN, RN (1932 –2021)



I was saddened to hear of the death of Tony who, with his late wife Mary, who passed away in 2011, enjoyed a long association with the Friends of Stansted. Tony and his family moved to Rowlands Castle in 1973 and, with their wide range of interests and talents, made huge contributions to the cultural and social life of the village. Stansted too, was held in great affection and, over the years, this devoted couple gave great support to the Friends in all its spheres, fund raising, social gatherings, walks and talks. Tony was one of life's great characters.

Tony founded the Rowlands Castle Historical Society in the 1980s and was a churchwarden for many years at St Hubert's Church, Idsworth. Always immaculately dressed with his trademark cravat, he will be much missed by all those fortunate to have had the pleasure of knowing him. *Michael Olding*

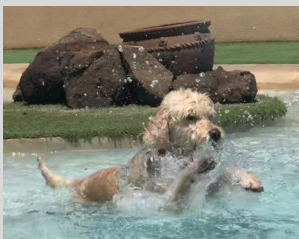
RUTH CHAVASSE (1932-2021)



Ruth and Robin Chavasse enjoyed close ties to Forestside and Stansted from the time they built their home at the Old Orchard in 1962. They were early members of FOSP and, during the Chapel window restoration, asked for anniversary gifts to go towards this: Ruth also edited the booklet on Charles Dixon. The enchantment of Stansted Forest and Forestside ensured that the family always returned here after RN officer Robin's various postings.

Ruth was a theologian and expert on the Reformation, Italian Renaissance history and the history of art. In her university posts she had the gift of inspiring students. She was also a talented linguist and musician. As Edward Mynors said in his tribute at the funeral reception at Stansted, 'Ruth was a dear friend, a fount of information, a great supporter of Stansted and all that happens here and a devout Christian, and we will miss her dearly.' *Jennie Dolman*

SCRUFFY



Those of you who remember Jill and Tony Waring will be sad to hear that their lovely dog, Scruffy, died at the beginning of January. Both Jill and Tony gave a great deal of their time to Stansted, indeed Jill was the Newsletter Editor and original renovator of the Dutch Garden prior to moving to Tenerife and still writes us wonderful articles. This is the message received from Tony:

Sadly our ten year old dog, Scruffy, died last week. She had contracted Lyme Disease following a tick bite that infected her with spirochete bacteria and symptoms that did not manifest themselves for a few months. Dog owners be warned, this can be a delayed action infection. Scruffy was an incredible little bundle of joy and was friends with everyone and loved by all who knew her. We attribute absolutely no anthropomorphic thoughts to her but a day or two ago we became aware of the following:

SCRUFFY'S LAST WILL AND TESTAMENT

Before you humans die, you write your last will and testament and give all you have to those you leave behind. If, with my paw, I could do the same thing, this is what I'd ask:

To a poor and lonely stray I'd give my happy home, my bowl and cosy bed, soft pillow, and all my toys; the laps which I loved so much; the hands that stroked my fur and the sweet voices that spoke my name. I would will to a scared shelter dog the place I had in my humans' loving heart of which there seemed no bounds. So when I die, please do not say **'I will never have a pet again for the loss and pain is more than I can bear.'** Instead, go find an unloved dog, one whose life has held no joy or hope and give my place to him or her. This is all that I can give, the love I have left behind.

Scruffy



FROM THE ARCHIVES

I wonder how many of you read the Daily Telegraph? If you bought this paper on Thursday 9th December 2021 did you spot the picture in the Letters column of 'A green and pleasant Cambrian Road, Richmond, Surrey 1914 painted by Spencer Frederick Gore?'



As the archivist looking after Sir John Ponsonby's wonderful collection, I often have my leg pulled as inevitably whenever a different place, person or historical subject is discussed, more often than not, there is a Ponsonby connection to it! Sure enough there is one here! A letter sent to the Telegraph by a gentleman from Glamorgan stating the view that 'Greener streets are not a cure for society's ills' gave us the opportunity to see a painting by Spencer F. Gore.

One of John, 4th Earl of Bessborough's children was Lady Augusta who, after the early death of her first husband, married Spencer William Gore, grandson of the 2nd Earl of Arran. He, amongst other things, was renowned as the first Wimbledon Tennis champion. Their fourth child was Spencer Frederick Gore, 1878-1914, who became a successful artist.

A painter of landscapes, music hall scenes and interiors, usually with a single figure depicted, he was a founder member of the Camden Town Group. He was a friend of William Sickert, Lucien Pissarro, Harold Gilman and Charles Ginner and became a member of the New English Art Club.

He painted a series of 32 landscapes in Richmond Park during the last months of his life. This picture shows the view from the top-floor window at the rear of his home at 6 Cambrian Road, near to the Cambrian Gate, Richmond Park, Surrey.

It is thought that his early death from pneumonia, at the age of 35, was caused by painting in the cold and wet weather in the Park. He had a very personal way of experimenting with colour and was greatly influenced by the Post-Impressionists. His work was exhibited in Warsaw, Helsingborg and Stockholm by the British Council and he had a very bright future before him.

He always had many plans for his next work, full of enthusiasm and ideas, always having time for younger artists and a generous nature to all who met him.

His paintings are included amongst the collections of the Tate Gallery, Yale Centre of British Art, the Ashmolean Museum and Birmingham Art galleries.

So you see, you can never tell where the Ponsonby family will appear! Which makes my job all the more interesting!

Diana Roberts

BIRDS OF PREY, BARN OWL PROJECT - TALK BY KIM BOOG



Kim started this project 10 years ago to study the Barn Owl and to be able to give support and education on this fascinating raptor. She now has a wide knowledge and much experience of their behaviour and life cycle and will be sharing this with us. Kim works with the RSPA and the Barn Owl Trust and others and is authorised to inspect barn owl nests. She is on the register of Birds of Prey Professionals and is frequently called upon in a rescue or hospitalization situation. Accompanying her will be 'Boy' a Barn Owl and 'Tatty' a Tawny Owl with their own stories. This will be an informative and instructive talk on one of our most iconic Birds of Prey.

Chris Freeborough (Wearing of masks will be at the individual's discretion)

Contact the Estate Office to book - see page 6

10th April - First cuckoo this morning. Last year I heard it first on 17th April. Saw brimstone butterfly and queen bumble-bee. Found more blackbirds' and thrushes' nests with eggs, a hedge sparrow's with four eggs and a robin's ready for laying; also an old squirrel's nut-store (or a field mouse's) buried under a hedge.

11th April - First spring walk over the downs. When, we reached the river (near Racton) we looked for water-voles, last year we saw several there. Soon I heard a 'cloop' and there was a water-vole. He drifted with the tide and disappeared under a root.

16th April - The swallows are here - on the same date as last year.

17th April - Cuckoo calling all day. The woods are full of early bluebells, purple orchises, milkmaids, stitchwort, primroses, violets, wild strawberry flowers, yellow wood-spurge. In the meadows, daisies, dandelions, violets, cowslips. I found an orange cowslip, near the place where a few years ago I found a red one.

Ruth Tomlin - From Garden House Diaries (Chapter 2 - Into the Woods [1930 - 193])



JEWELS OF SPRING

First snowdrops come
And we are blessed,
Then primroses
Shall be our guest.
No season is more finely dressed
Than spring.

Valerie Godwin



SPRING NEWSLETTER 2022

2022 HOUSE DATES FOR YOUR DIARY

MARCH

Thursday 10th - **MUSIC EVENING**

Sunday 27th - **MOTHERING SUNDAY**

APRIL

Friday 8th 6:00pm to 7:30pm

MURDER MYSTERY AT STANSTED HOUSE
from 'Torchlight Mysteries'

Tickets: £7.50 to £15

Sunday 17th - **HOUSE OPENS TO THE PUBLIC**

MAY

Thursday 12th - **MUSIC EVENING**

Sunday 15th - **MG RALLY**

Sunday 29th - **ROLLS ROYCE RALLY**

JUNE

Friday 10th to Sunday 12th - **THE GARDEN SHOW**

17th to 19th - **THE NOSTALGIA SHOW**

Friday 24th and Saturday 25th

DAVID WALLIAMS OUTDOOR THEATRE
'**AWFUL AUNTY**'

JULY

2nd and 3rd - **STANSTED SUMMER JAMBOREE**

Tickets from £10 to £25 (Book early for the best value).
Children 13 years and under free with an accompanying adult.

Saturday 16th - **PIRATES OF PENZANCE**

Sunday 17th - **SUPERCAR SHOW**

Thursday 28th - **PANTALOONS OUTDOOR THEATRE**

For more information please contact the office on
023 9241 2265 or enquiry@stanstedpark.co.uk

PLEASE SUPPORT STANSTED HOUSE

A discount to FOSP members is available on most
Foundation events

CONTACTING STANSTED HOUSE

For a general enquiry, or for information about visits and
social events, please telephone, email or write to:-

The Estate Office
Stansted Park Foundation
PO9 6DX

Telephone No: 023 9241 2265

Email: enquiry@stanstedpark.co.uk

COMMITTEE MEMBER CONTACTS

Chairman:- Michael Olding
michael.olding@btinternet.com

Secretary:- Anne Burton
anneburton99@gmail.com

Treasurer:- Sarah Hutchinson
hutchsj@yahoo.co.uk

Membership:- Paul Bennett
friendsofstanstedpark@outlook.com

Newsletter Editor:- Robert Godwin
crana.crana@ntlworld.com

For FOSP Membership Enquiries please contact
Paul Bennett

NEXT FOSP NEWSLETTER COPY DATE
Friday 29th April 2022

FOSP 2022 DATES

FEBRUARY

Thursday 10th at 7.00pm - Talk by David Bennett

'**ARABIAN ADVENTURES**'

MARCH

Thursday 24th at 10:00pm

AGM, COFFEE MORNING AND HOUSE SEASON
PREVIEW

(AGM papers will be emailed/posted to you separately)

APRIL

Wednesday 20th at 2.00pm - **HEAD FORESTER'S WALK**

Visit the Sling and nearby areas of the forest.
Park in Rowlands Castle and walk in via the public entrance on the
Finchdean Road.

MAY

Thursday 5th at 7:00pm

BARN OWL PROJECT - Talk by Kim Boog
(Members £5 non-members £8 including refreshments from 6.30pm.
See article on page 5)

JUNE

Wednesday 1st - **OUTING TO STRATFIELD SAYE**
(Priority will be given to FOSP Members. Please wait for booking
form which will be sent separately in March. See also article on
page 4)

Tuesday 28th - **SUMMER PARTY**
(Further details and application form will be in the next
Newsletter)

JULY

Thursday 21st - **CREAM TEA**
(Further details and application form will be in the next Newsletter)

PLEASE TELEPHONE 023 9241 2265
TO BOOK YOUR PLACE for talks, coffee mornings, FOSP
events etc in order that we can arrange appropriate seating and
refreshments. Thank you

BOOKING IS NOT REQUIRED FOR HEAD
FORESTER'S WALKS

For Foundation and FOSP events at the House, follow signs
to 'Stansted Offices' - 2nd Estate entrance NOT Garden
Centre entrance driving from Emsworth Common Road.
Drive slowly through automatic black iron gates and park in
front of House unless otherwise directed.

Please note that Stansted Park Bookshop funds collected go
straight to the Foundation for Estate enhancements.

PLEASE NOTE: Friends events are organised for our
loyal members so they will get priority booking. If there are
extra places available, we will, of course, take bookings from
a guest of a Friend who is not a member. **So please**
encourage your friends to become members.
The Committee

MEMBERSHIP RENEWAL

A reminder that membership payments were due on
1st January. If you have not already done so, please pay by
setting up a direct debit on-line or renew with a card payment
through Kim at the Estate Office.

If you have any queries, change of address or email, then
contact the Membership Secretary, Paul Bennett, by email on

friendsofstanstedpark@outlook.com

or call the Estate Office on 023 9241 2265.