

FRIENDS OF



ANNUAL GENERAL MEETING AND COFFEE MORNING

This important meeting of the Friends of Stansted was, again, very well attended and formalities were dealt with in a brisk and efficient manner.

In his report, Michael hoped that, after the cancellation of two key events last year, we could hope to run all our usual favourites during the coming year – *see the calendar of planned events on the back page*.

Michael felt that an excellent relationship had been built between the Friends and the Foundation and warmly thanked David Bennett and the rest of his team – Michael, Lucy, Toby, Aleks, Dawn and Sandra, who all contribute to the smooth running of Friends' events in the Mansion and on the Estate, but he particularly wanted to put on record his thanks for the exceptional role played by Kim in her unfailing support of the Committee and the membership.

The latest donation of funds to the Foundation was for a Mobility Buggy. This was parked outside for members to view, and some of us had a ride too!

After 26 years association with the Estate, with his wife Sheila, and 23 years on the Committee, Michael told members that he had decided to stand down at the end of the year. Then the main business of the morning took place – coffee and lots of home-made cakes, generously supplied, as always, by members. *Anne Burton*

MESSAGE FROM THE DIRECTOR

The Opening of the House and Grounds certainly got off to a flying start on Easter Sunday with the glorious weather helping to lift the mood of the country in the midst of a gloomy world picture. It was certainly wonderful to have the Maze open again and it is clear that this remains a popular attraction. In addition, the Stansted Park Light Railway is in the process of being reinvigorated by the Jago family and the Foundation hopes to work closely with them to enhance the attractiveness of Stansted Park as a visitor destination.



Following the re-ordering of the Mansion by Yanni Petsopoulos and Aleramo Lanza, ably assisted by Aleks James, we have had many favourable comments about its new lay out and displays. Indeed, Lord Bessborough hosted a Ponsonby gathering of over 200 family members who were all incredibly impressed by the state of Stansted House. My thanks to all the House Stewards who have shown great patience over the last couple of years and I am grateful to all of them for their continuing commitment. The Grounds are also looking at their best at the moment and my thanks, as ever, go to Jed and the Garden Volunteers who keep everything looking so well kept. We will be conducting photographic shoots of the House and Grounds in May in order to support our gallery of amazing images of the Estate.

The Friends have very kindly donated the funds for the Foundation to acquire a Mobility Buggy to replace the previous one which, in the end, had much less mobility than those it was designed to carry. It is an excellent vehicle with a wheelchair ramp and is an important addition to our fleet to help those visitors with reduced mobility and we are hugely appreciative.

The new logo has appeared on our new signs outside the Estate and we are now turning to upgrading the new internal signage; this will make an enormous difference to not only standardising and smartening up our signage but also ensuring that visitors are guided to the right entrance, 'North or 'South' and, once inside the Estate, to the right destination.

The Bookshop continues to thrive; extended bookshelves have recently been installed and the whole enterprise with the dedication of its Volunteers has become quite a profit centre!

There are a couple of commercial offices becoming available in the next month or so and I hope that these can be filled either by new businesses or by those escaping from home-working. We have just started the refurbishment of two Estate Cottages as part of a rolling programme to upgrade the Foundation's housing stock. This is an expensive but necessary undertaking which, together with a full programme of repairs and maintenance, will improve the attractiveness of our residential properties.

We live in hope that the repairs to the Clock Tower will be complete by the end of May such that the scaffolding can be dismantled and the Stable Block returned to normal in time for our prime Summer Season.

Plans are well advanced for Stansted Summer Jamboree being held over the weekend of 2nd & 3rd July with an impressive array of entertainment, including the Band of the Brigade of Gurkhas on the Sunday. It should prove to be a fun weekend and is designed to raise morale in a traditional country estate setting. The Archivists have been busy preparing a display on Stansted's Royal connections for Her Majesty's Jubilee as well as delving into the Bessborough cricketing heritage with the founding of I Zingari, the renowned Gentleman's Touring Side.



The Band of the Brigade of Gurkhas

The country is learning to live with Covid and people are determined to get out and about and return to something resembling normality. However, just as we emerge from the ravages of the pandemic we have the scourge of the war in Ukraine; our hearts go out to all those who are suffering as a result. The rise in prices will clearly affect the spending power of all and it remains to be seen what effect this will have on paying visitors to the Estate and the consumer activity in our retail outlets. However, early indications are that this summer may be another one for Staycations and so we should brace ourselves for large influxes of eager visitors needing to be entertained by Stansted Park's numerous attractions and its inestimable beauty.

David Bennett

HEAD FORESTER'S NOTES - SUMMER 2022

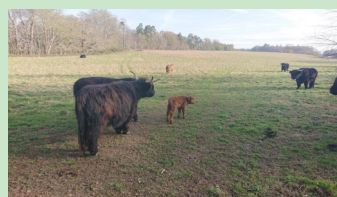


Our chestnut coppice-cutting season ended, as usual, in the second week of April with 12 acres cut on two sites, which were very different in character. The first, a large block last cut 25 years ago, has very few standard trees scattered across it, nearly all ash and, therefore, throwing a light shade. Because of this, the poles were very straight and the area has produced a high volume of fencing produce as opposed to bio-fuel. The second and smaller block had not been cut for 30 years and was well stocked with some very large standards including some wonderful old oak. The produce here under the heavy shade was much more weighted towards bio-fuel, with good fencing products, only in the more open areas. However, I am not planning on removing many standards this time, apart from a few diseased ash, as this is a very attractive and biodiverse piece of the forest and it is, after all, this constant diversity that gives the woodlands their interest and beauty. The focus now is for the contractor to get all this produce extracted whilst it is dry and before the stools start to send out new shoots.

Our regular harvesting contractor, Powell Forestry, have just started on a large programme of thinning work in our conifer plantations, designed to give room to the best trees, so they can grow to their full potential whilst the produce removed will provide income. This work often attracts adverse comments from the visiting public but, as I try to explain in my information notes on site, it is just the same as someone thinning out their row of lettuces to produce large, tasty plants. With 80% of the nation's timber imported and being number two in the world table of wood importers after China, we cannot afford to not grow good, commercial timber crops where it is appropriate. In addition, opening up of timber crops allows light to reach the woodland floor stimulating growth of woody shrubs and some native trees that can be incorporated into the mix.

At the time of writing this report, we have had a week of births with five Highland calves already and possibly two more to come. Highland calves are exceptionally attractive amongst cattle breeds and they have received much attention with groups of visitors trying to capture a good image on their phones. Conversely, our lapwings have not had a successful breeding season and, although there were four birds displaying over the nesting area at the start of the season and we thought we had two sitting hens with a male in attendance standing guard, the site appears now to have been deserted. We will keep looking as they can be quite hard to find but we are not seeing a bird rise up to challenge potential predators such as carrion crows and buzzards.

By the time the thinning work is completed we will be able to assess the number of ash trees that have further succumbed to ash dieback disease by the amount of foliage produced or, more likely, the lack of it. Along with other areas, we will be felling more trees on the escarpment where the majority of the ash retained in the first programme of work are now exhibiting advanced dieback. This is one area we will not replant if at all possible, as establishing planted trees on this dry, flinty and very calcareous slope will be problematical, so we will look to natural regeneration. At present, I can see thousands of young ash coming up in the gaps but these will no doubt succumb to the disease. Nevertheless, in amongst them there are good numbers of beech, field maple, cherry and a few oak to create a new crop. The Pond Wood will be just as challenging to replant, being exceptionally wet most of the year, resulting in only a short window to get machinery in and complete the felling work. This will be replanted using species that tolerate wet conditions and will grow quickly to get above the tangle of bramble and wild privet that thrives as an understorey there, such as aspen and the hybrid black poplars. **Michael Prior**



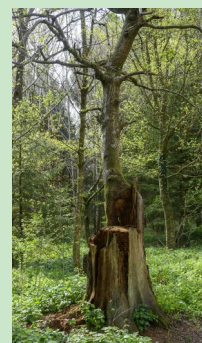
FOSP WALK - 20TH APRIL 2022



A number of Friends of Stansted and Rowlands Castle Gardening Club gathered at The Sling for the first walk of the year. We started by looking at the new planting here and in Turners Piece. The meaning of the Sling may have a link to Stein or stones. Looking at the earth, this may be the latter!

Moving on to the Avenue, we looked at the regeneration of the margins. These are left as a wide edge for generation of various trees including turkey oak. This margin protects walkers from risk of sudden branch drop 'cordon sanitaire'. We looked at Turners Piece which was mixed planted in 2015. It is now supporting warblers, nesting wrens and blackbirds.

Michael then led us through the forest to The Broadwalk which was planted with 200 lime trees for the millennium. A wide walk has been cut through the middle for walkers. We then went on to his favourite tree in the Park, 'the Phoenix oak', that had been broken off in 1987 and has continued to regenerate. We ended up on Main Avenue where we observed some careful management of a large veteran beech tree that had had its crown weight reduced. An afternoon enjoyed by all. **Sarah Hutchinson (photographs Michael Parry)**



The Phoenix oak

STANSTED PARK FOUNDATION BOOKSHOP



The Foundation's Second Hand Bookshop in the Garden Centre has recently been refurbished - we are now the proud owners of two new units, giving lots of extra shelving and more areas for display.

The photograph shows bookshop volunteer, Nigel, sporting the new apron who is clearly very pleased with it!

Janet Mynors

BATS - SUPERHEROES OF THE NIGHT



Bats are amazing, charming, useful mammals and have experienced serious declines in the UK over the past century. The Stansted Park Estate has an excellent record in helping with the conservation of these significant components of our natural heritage. An amazing fifteen out of the UK's total of seventeen breeding bat species have been recorded in the area in recent years, making this one of the most special places in the country.

Nik Knight is the Chairman of local conservation charity the Hampshire Bat Group and also the Hampshire County Recorder for bats, so his talk on 10th November at 2.00pm should not to be missed. More information in the next Newsletter.

Chris

SUMMER NEWSLETTER 2022

COMMITTEE MEMBER PROFILES

As editor, I thought it about time for FOSP members to get to know their Committee better. So, after much cajoling, I have at last managed to persuade them to write their profiles, which will be published over the next few editions.

NIGEL SMITH



I was born in 1957 in High Wycombe, which, at the time, was famous for its wheel back chairs made by 'bodgers' in the surrounding woods. I had an idyllic early childhood, walking two miles to school come rain or shine, across fields and through woods and thus began my love of the countryside.

In 1976 I moved to Portsmouth to attend the Polytechnic where I studied Quantity Surveying and this became my profession for over 40 years. For the last nine years, I have run a successful company with a friend and managed to reduce my working hours, year on year, until I finally embraced retirement this month.

I met my first love, Judith, whilst living on Hayling Island in 1977 and thus had no reason to return home. We lived and worked locally and were blessed with two children, Victoria and Andrew.

My association with Stansted began in the early 2000s when

Judith started working with Anne Burton in a job share for James Cooper. For five years it became a special part of her life until she became ill and, after a long and debilitating fight against leukaemia, she sadly passed away in 2010. I was determined to embrace the love she had developed for Stansted and the family regularly visits the commemorative bench overlooking the cricket square and the annual events we enjoyed attending.

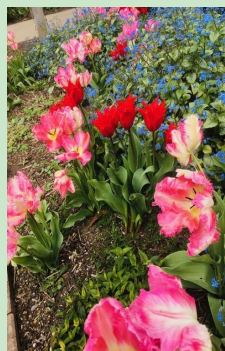
Our daughter, Victoria, was married at Stansted in 2012.

I started volunteering in the Foundation Bookshop in 2017 and joined the Committee of FOSP in 2019 and currently help organise the trips and talks with Chris.

My partner, Ruth, and I share a love of golf and are both members at Waterlooville Golf Club.

I enjoy cooking, watching sport, reading and spending time with my grandchildren, Phoebe (7) and Hugo (4), and through my weekly child care sessions, currently help to run a Parent and Toddler Group on a Wednesday in Lovedean Village Hall.

GARDEN NOTES



Once again, the spring bulbs have been delighting visitors to the walled garden brightening what was, often, very chilly days.

Strong winds brought down some branches but the lack of rain has been the most difficult challenge for the Volunteers. On one very windy Thursday we had to abandon work at the Mansion when one of our ladies was literally blown off her feet!

We had good spring displays in the Mansion urns, now planted with traditional red geraniums which we hope will thrive with better weather. The six wooden planters near the Farm Shop have been planted with a good variety of herbs which are growing well.

Progress has been made in the Dutch garden following the hellebore display and we hope to plant the 'hot border' with dry tolerant plants which we have been bringing on.

The lower Arboretum is now open to the public and Jed has cut some attractive pathways making it easy for people to explore that area and enjoy the wildflowers and new growth on the trees. The Well Head garden should soon have a fine display of allium and lupin so please walk down there and enjoy the peaceful nature of the Arboretum. *Tessa Culley*

FRIENDS' SUMMER SUPPER JUBILEE PARTY TUESDAY 28TH JUNE AT 6.30 AT THE PAVILION TEA ROOMS

After not being able to hold our annual Supper Party for the last two years, your Friends of Stansted Committee is delighted to announce that plans are under way for this special Jubilee Year's gathering.

This important annual event for our members has been sadly missed, but you now have the chance to join the Committee and Friends for a convivial evening at the Pavilion Tea Room. We will be sticking to our usual winning formula, which starts with sparkling wine and soft drinks (outside in the sunshine!) followed by Clare's delicious buffet supper, and dessert, in the Pavilion. Other drinks, tea, and coffee will also be available at the bar.

We are most grateful to Clare and her team of dedicated staff who, for many years now, have made our evening such a success – each year FOSP has been given generous discounts on the use of the facilities and cost of refreshments.

Another annual feature of this evening is the Raffle. We already have some generous prizes donated for last year's event, but we would welcome any extra raffle prizes (you could bring them on the day). The proceeds from the Raffle, as always, go towards special projects to support the Foundation. **Cost £20** (Non-members £25)

Members now have the opportunity to pay by card: simply call the Estate Office (mornings, before 12.00 please) giving names, FOSP Membership number, a contact telephone number, and have your card details to hand. If you would prefer to pay by cheque, please send details of names, FOSP membership number, a contact telephone number, and your cheque, payable to:-

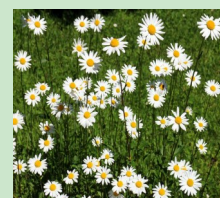
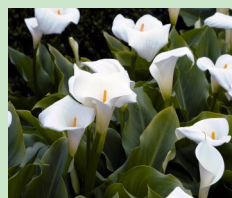
'Friends of Stansted Park' to Anne Burton, Dapplend, Walnut Tree Drive, Woodmancote, Emsworth, PO10 8QH



TREASURES OF SUMMER

I shall forever sing their praises;
Roses, lilies and sweet daisies.

Valerie Godwin



FROM THE ARCHIVES - From Cromwell to Queen Elizabeth II



If you have a few minutes to spare on your next visit to Stansted Park House, just pop down to the Servants' Hall and you will be greeted by a small display that we have put together to recognise and celebrate the Queen's Jubilee year.

We realise how lucky we are to have such a good collection started by Major General Sir John Ponsonby.

We have unique letters, papers and other items that tell the story of the Ponsonby family from the early days during the Cromwellian times through to the present day, together with the history of Stansted Park House itself.

In this display we have tried to show a variety of items. I am afraid that all items have been copied, the originals being too precious for display purposes.

The trail that we have tried to cover includes the house, the families who lived in the house and the Royal connection of so many of these families. It has been impossible to mention every connection in this display but we hope it will give you a flavour of their history.

So, we have hopefully picked out some of the most interesting, intriguing and amusing events. It is, therefore, a bit of a hotchpot of items, but we hope this will wet your appetite to perhaps find out more! Some may surprise you and others you may not find in the least bit interesting. However, please take a look as I believe you will find something that is truly fascinating amongst the exhibits. We also hope that it will add a little more to this very special year and that you will agree with us when we say **God save the Queen!** *Diana Roberts*



MEMORIES OF STANSTED BY ANNE HAIGH

At our recent AGM, Anne Haigh very kindly gave me an article for the Newsletter. It is quite clear that Anne thoroughly enjoyed her time working in the office and has fond memories of those far off days. She has been a great and loyal Friend of Stansted for many years and her reminiscences are a gentle reminder of how life has changed since even the early 1970s. *Michael Olding*



The tenth Earl and Countess of Bessborough

In 1975, I was very pleased to take over the work at Stansted Park from Mrs Rosemary Housden in the Estate Office.

The tenth Earl and Countess of Bessborough lived in the main house with their staff, and there was also a flat on the top floor where their friend Lady George lived. Lady George used the old fashioned 'concertina' type lift which, remarkably, is still in use today.

My office hours were two mornings a week, working out PAYE (Pay As You Earn) forms for the Estate workers. I had worked in my first job (aged 17) in the Estate Office in Rozelle, in Alloway, Ayrshire for a family there.

As my husband and I lived in Wellsworth Lane, Rowlands Castle, I was able to cycle up to the House through the lovely woods; no gates then to stop anyone else driving up the same way.

The Estate workers included those at the sawmills with a great character, Nobby Clarke, in charge. The gardener, Charles Koppert, lived in one of the cottages and he looked after the large greenhouse (now the Pavilion Tea Room) and the smaller glass houses alongside, producing lovely vegetables which were for sale. There were also vines to tend to and the walled garden.

I worked mainly for Catheryn Hurlin, who had been personal assistant to Lord Bessborough and, with my office companion, Rosemary Housden, made up the farm workers wages. Drew's Farm was part of the Estate then.

The equally important woodsmen came under the Estate Management with John Rowe in charge (whom I actually found very frightening).

My job of completing the official PAYE forms, tiresome pages of columns that had to be worked out accurately for all employees each week, was demanding. Woe betide if one figure was inaccurate as that mistake made everything else wrong! The pay packets were all in cash, of course, so that meant more counting of pounds and pennies for each pay slip and then it was off to the bank to collect the cash. The staff would then come to the office to collect their made up pay packets.

Our offices were part of the stable block with a lovely view of the trees, front drive and cricket pitch. Lady Bessborough used to come down to see us, as did the Lord Bessborough, from time to time to see how we were getting on.

The House was completely private then, with quite a few guests and family coming and going. The chauffeur, Bernard, and his wife, Pearl, lived in the house in the courtyard. I remember that there were various kittens being fed by Pearl. We were allowed to use the swimming pool when no one else was there and, on occasions, my husband and I were invited to very grand drinks parties in the library, which was normally kept very private!

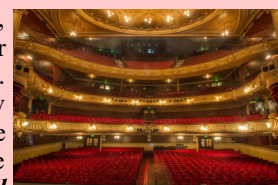
After two years, we had a posting with the Royal Navy, to Washington DC, so sadly we left for America. Such a very enjoyable experience at Stansted to remember - how enormously life has changed since then? *Anne Haigh*

KINGS THEATRE HISTORY TOUR



There is a planned visit to The Kings Theatre Portsmouth later this year, so please look out for details in the next Newsletter. The two hour historical tour (including refreshments) will cost £8 per person.

Step behind the scenes and see the iconic theatre from a new perspective. The tour will allow you to visit the unseen areas of this Grade II listed Edwardian Playhouse and delve into the secrets and history of the past. *Please note that, due to the age and design of the theatre, not all parts will be accessible to mobility impaired visitors.* *Nigel Smith*



A FAVOURITE CORRESPONDENT - RUTH TOMALIN

Following on from my previous article about Ruth Tomalin - I have been going through the correspondence Ruth and I shared from our first meeting in 2005 - the year the Dutch Garden was reopened by Alan Titchmarsh.

Having read 'The Garden House' and 'Garden House Diaries', I was looking forward to making her acquaintance and wondering what she would make of the changes to the walled garden she had lived beside for so many of her childhood years. She appeared to absorb the content of each flower bed as she walked around in the drizzle and wrote me a charming letter soon after the event, inviting me to visit her home in Eastbourne to learn more about life on the Estate during her time there. I willingly accepted and so began some years of written correspondence, phone calls and her visits to Stansted with Gail, her daughter-in-law, until her death. I have picked out some which may act as a reminder to original FOSP members and perhaps be of interest to more recent members:-

Jill - 14th August 2005: 'I am enclosing a copy of the video Tony and I made for FOSP in 2003. Even in such a short time, much of the information is obsolete but there are some interesting things concerning refurbishments of the old stables and some wood being replaced on the chapel exterior - a new lintel, I believe, with a half-crown inserted for the future. We hope to do a more detailed programme of Stansted's history - time permitting.'

[Due to economic pressures and our own heavy filming programme at the time, we were unable to commit our company further, but we've asked Leigh if he could find the original in the MVI archives and digitise it for DVD or e-viewing which a few members have requested. He's not making any promises but will try].

'I am also enclosing a copy of the nostalgic memories of sisters who were evacuated to Stansted from the Portsmouth area during the war. They came into the Dutch Garden when I was working, having not visited since 1945! This sort of thing is priceless for building up past history.'

'I continue to be amazed by the interest shown with the new planting in progress. Word has obviously got out and many locals who served or knew the Bessborough family have been to visit. It can be distracting getting on with garden work with such frequent and interesting diversions!.'

'Michael Prior lent me a copy of 'The Countryman' and wondered if the gentleman standing by fruit trees in the large walled garden might be your father?'

Ruth - 30th August 2005: 'Thank you for the delightful video giving glimpses of the woods, grounds, work and the many events - what a wonderful record. Watching it, one realises how the 10th Lord Bessborough would have approved, with his notable talent for 'public relations' that included many 'Times' letters as well as news stories concerning orchids on the cricket field, protective shields around young trees in the forest, quite apart from his books - 'Return to the Forest' and 'Enchanted Forest'.

'I found the recollections of the sisters at 'Services House' very moving. I'm so glad that one of those little girls found her way to the ring of fir trees in the old tennis court garden where my father arranged displays of flowers with special soil needs such as blue poppies - *Meconopsis sheldonii* and in another bed with *Lilium Giganteum* - striking silver-white against the dark trees'.

'Yes, I'm sure that is my father beside the espalier pear - taken opposite the peach houses with oaks and cedar near the chapel in the background. I think Father knew Raymond Bush who wrote regularly in 'The Countryman.' Interesting about that 'standard top' on the pear tree: when the pear flowered in the following spring - Coronation year - Mother pointed out that from her bedroom window it looked like a beautiful silvery crown.'

'No doubt it's known at Stansted that Leslie Buckle (Head Keeper from 1960, in succession to Mr William Woolfries, whom we all knew in 'our' time), is featured in a book, 'Tales of the Old Gamekeepers' by Brian Martin - publishers David & Charles 1989 I think.'

As you can see, Ruth and I always had much to discuss which frequently included complaints about gardening weather either being too dry, wet or windy! But the snippets of information are memories of the past and can sometimes remind others who may also have similar or completely different memories of Stansted. In which case, do please send it/them to our excellent Editor. I shall have more for next time.

Have a wonderful summer and do please support the events which help to maintain and improve the House and its beautiful surroundings.



Mr T.E. Tomalin

'Espalier fruit trees - A standard top has an advantage; the tendency of the sap to rise vertically helps to feed the long laterals and induces a more even flow. The photograph shows a healthy tree of this kind growing at Stansted Park in Hampshire in 1936.'

Raymond Bush, Jamaica



Peach houses - as mentioned by Ruth

Jill Waring (Editors note: Jill hopes to visit the UK and Stansted in particular during early May)

EXTRACT FROM "GARDEN HOUSE DIARIES" BY RUTH TOMALIN

TIME - EARLY 1930S - DATE 18TH JULY

"Lady's-tresses in a beechwood below the downs, also purple pyramid orchids, and three brown bird's-nest orchids in a chalk quarry.

The cuckoo calls no longer. Birds silent, but for a 'ticking' wren."



SUMMER NEWSLETTER 2022

2022 HOUSE DATES FOR YOUR DIARY

NOTE: Midday services take place in St Paul's Chapel on the first Wednesday of each month. Light refreshments will also be served after the service – tea/coffee/biscuits. Please contact the Estate Office if you wish to attend in order that you can be catered for.

MAY

Thursday 12th - **MUSIC EVENING**

Sunday 15th - **MG RALLY**

JUNE

Friday 10th to Sunday 12th - **THE GARDEN SHOW**



17th to 19th - **THE NOSTALGIA SHOW**

Friday 24th and Saturday 25th
DAVID WALLIAMS OUTDOOR THEATRE
'AWFUL AUNTY'

JULY

Saturday 2nd and Sunday 3rd
STANSTED SUMMER JAMBOREE

Tickets from £10 to £25 (Book early for the best value). Children 13 years and under free with an accompanying adult. **FOSP Members may obtain a discount of 20% on all tickets by contacting the Estate Office and obtaining a code to use online when booking.**

Saturday 16th - **PIRATES OF PENZANCE**

Sunday 17th - **SUPERCAR SHOW**

Thursday 28th - **PANTALOONS OUTDOOR THEATRE**

AUGUST

CONCERTS AT STANSTED PARK

Sunday 7th - **EROICA BRITANNIA**

Friday 19th - **ABBA REVIVAL/TINA TURNER**

Saturday 20th - **PROMS SPECTACULAR**

For more information please contact the office on 023 9241 2265 or enquiry@stanstedpark.co.uk

PLEASE SUPPORT STANSTED HOUSE
For further information of House events see:

<https://www.stanstedpark.co.uk/whatson>

A discount to FOSP members is available on most Foundation events.

NOTE: Hard copies of the Newsletter are available from the Estate Office. *Editor*

NEXT FOSP NEWSLETTER COPY DATE

Friday 29th July 2022

FOSP 2022 DATES

MAY

Tuesday 24th - **Head Forester's Walk at 2.00pm**
South Coopers and Lyels Wood.
Meet in Garden Centre car park.

JUNE

Wednesday 1st - **OUTING TO STRATFIELD SAYE (FULLY BOOKED)**

Tuesday 28th
FRIENDS' SUMMER SUPPER JUBILEE PARTY
6.30PM

(See page 3)
Use the South Entrance and park in the Garden Centre Car Park

AUGUST

ALERT, ALERT – DATE CHANGE

Thursday 18th - **FRIENDS CREAM TEA at 3.00pm**
The cream tea is happening again this year. Hurray you say, that this social event is happening! Numbers have to be limited as our baking skills have to be constrained, so please book early. **£7 per FOSP Member** and £8 per non - member. See booking and payment details with Summer Party article on page 3.

SEPTEMBER

Tuesday 6th - **Head Forester's Walk at 2.00pm**
The Groves and Pond Wood - Meet in Garden Centre car park.

NOVEMBER

10th November - **A Talk on Bats at 2.00pm**
Booking information with the next newsletter

PLEASE TELEPHONE 023 9241 2265
TO BOOK YOUR PLACE for talks, coffee mornings, FOSP events etc in order that we can arrange appropriate seating and refreshments. Thank you

For Foundation and FOSP events at the House use the North Entrance, go through the automatic black gate, and park in front of the House unless otherwise directed.

BOOKING IS NOT REQUIRED FOR HEAD FORESTER'S WALKS

The funds raised by Stansted Park Foundation's bookshop in the Garden Centre are used by the Trustees for the enhancement of the Estate and the enjoyment of visitors.

COMMITTEE MEMBER CONTACTS

Chairman:- Michael Olding
michael.olding@btinternet.com

Secretary:- Anne Burton
anneburton99@gmail.com

Treasurer:- Sarah Hutchinson
hutchsj@yahoo.co.uk

Membership:- Paul Bennett
friendsofstanstedpark@outlook.com

Newsletter Editor:- Robert Godwin
crana.crana@ntlworld.com

For FOSP Membership Enquiries please contact Paul Bennett